



**Stevens-Johnson Syndrome Canada**  
awareness . education . support

## Our Mission

To be the leader in Canada providing support, advocacy and education for the SJS/TEN patient community. In 2012, founded by Sonia Whyte Croasdaile, a survivor of TEN, the goals of the organization are the following:

- To advance education by providing workshops, forums and seminars about SJS/TEN to the public and medical professionals.
- Promote health by providing people suffering from SJS/TEN as well as their families and caregivers with access to related counselling, support groups and information programs.
- To provide support, advocacy and education for SJS/TEN patient community patient community.

## Do you or someone you know struggle with the aftermath/sequelae of SJS/TEN?

Join our monthly SJS/TEN Support Group,  
the **3<sup>rd</sup> Wednesday of Every Month**

## What is Stevens-Johnson Syndrome and Toxic Epidermal Necrolysis?

- SJS and TEN represent different degrees of a severe, acute, life threatening mucocutaneous reaction resulting mainly from drugs.
- SJS/TEN cause the skin to become red and purple, tender, and peel away from the body. These diseases affect not only the skin on the external surface of the body, but also the moist lining of the mouth, nose, eyes, genitals, and other body parts.
- Both conditions are considered a medical emergency that requires hospitalization and management of patients is usually provided in intensive care units or burn centers.
- Recovery can take weeks to months, and there are numerous long term sequelae.
- Medications are the major precipitating cause and some drugs have a greater genetic risk factor. Newer treatments include safe anti-inflammatory biologic injections like Etanercept.

**JOIN THE FIGHT AGAINST THE DISEASE  
THAT BURNS THE BODY FROM THE INSIDE OUT.**  
**STEVENS-JOHNSON SYNDROME / TOXIC EPIDERMAL NECROLYSIS**



416-254-6543



sjsandtensgroupcanada@gmail.com



www.sjscanada.org



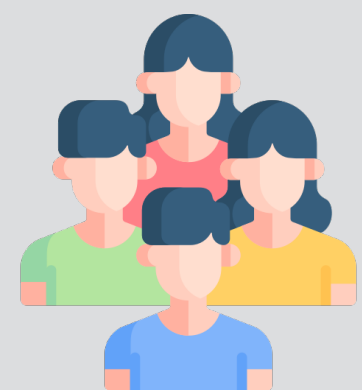
SJS TENS CA



SJS.Canada



Sonia W. Croasdaile



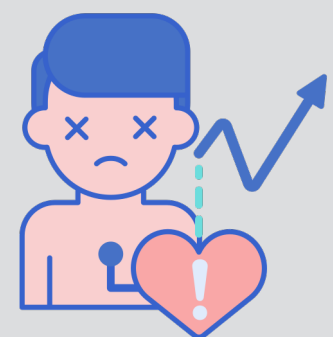
### SJS/TEN AFFECTS

1-7 Cases  
per million patients



### WOMEN ARE NEARLY

1.5x  
More likely to experience  
SJS/TEN than men



### DEATH RATES ARE

5% and 25%  
in SJS/TEN respectively